

# LOS Rating Measures for LRTP updates

*Dave Cox*

GDOT Office of Planning



# MAP-21 Performance Measures

- Performance based approach is required as part of the MPO planning process.
- MPO MTP's are required to includes "performance measures & targets" used in assessing the performance of the transportation system.
  - Targets: Congestion Reduction, System Reliability, Freight Movement & Economic Vitality
- "System Performance Report" be included in MTP to evaluate the condition & performance of the transportation system with respect to the performance targets established in the plan.

# Performance Measure/Target for Congestion: Level-of-Service (LOS)

- Traditional method of identifying & ranking congestion is based upon a Level-of-Service (LOS) Score
- LOS indicates how well a roadway facility accommodates the amount of vehicles traveling on it
- LOS displayed by letter score (A-F)
  - Traditional ratings:
    - LOS A / B / C viewed as acceptable
    - LOS D / E / F viewed as deficient

# Problem

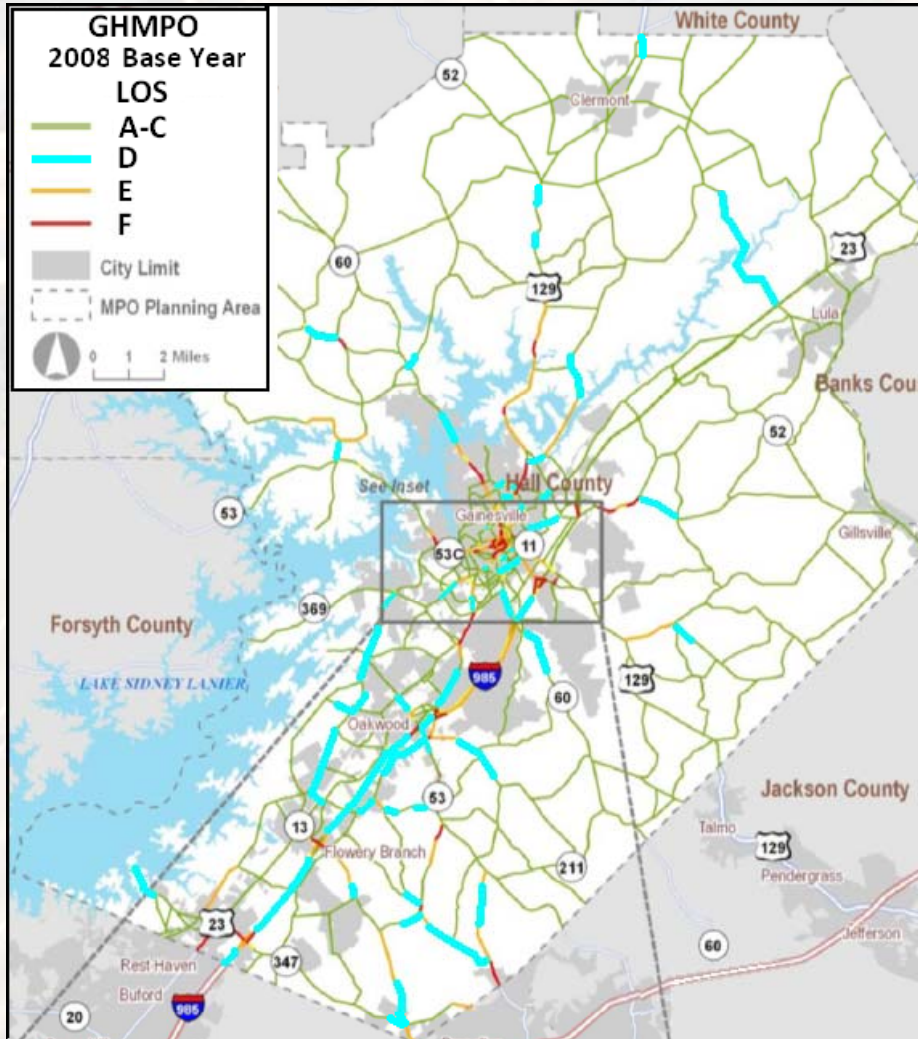
- Given the rapid growth in our urbanized areas demand has continued to outpace supply (capacity).
- Project Cost are increasing
- Traditional revenues sources are decreasing
- More projects are competing for fewer resources

# Potential Solution to assist Planning & Programming

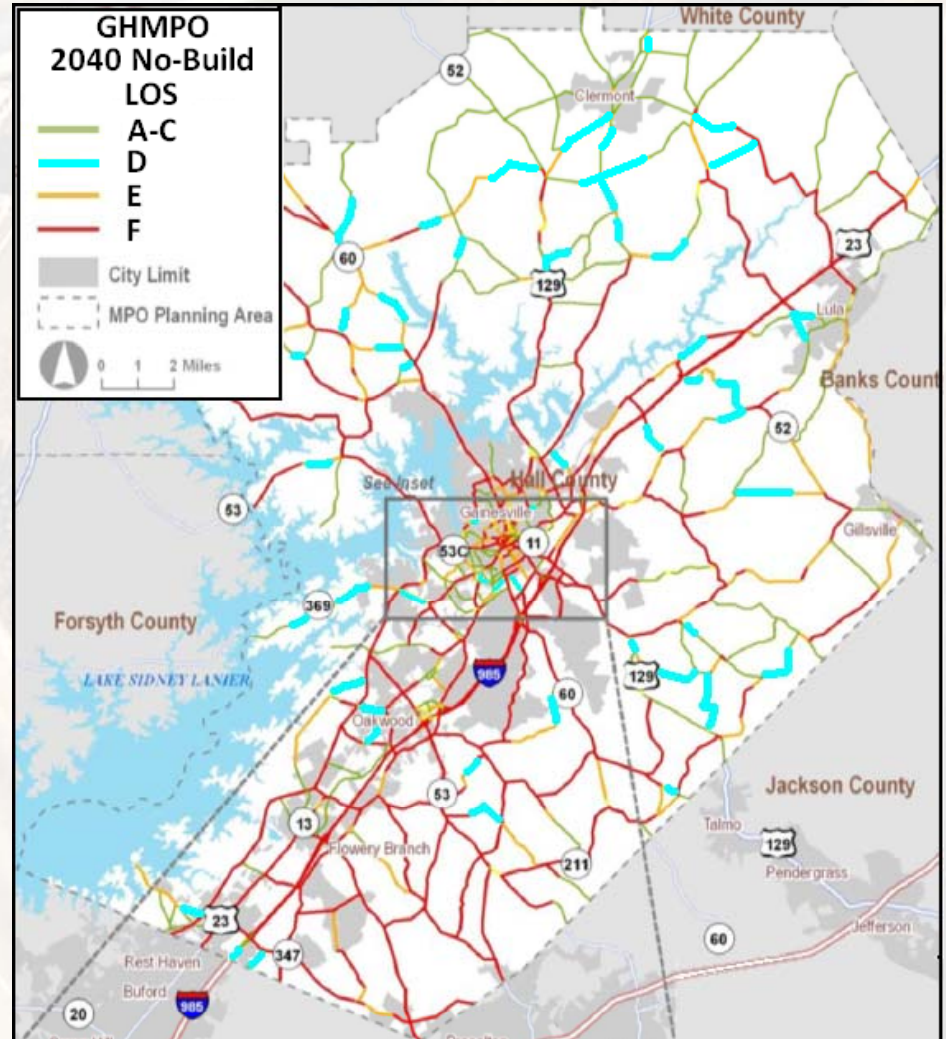
- Re-evaluate and document the LOS scoring criteria for determining congestion
- Define LOS D as a acceptable level of congestion in our urban areas.
- Gainesville and Savannah have already adopted this practice.

# Example: Hall County - LOS D Facilities

2008 LOS



2040 LOS



Source: Gainesville MPO 2040 MTP

# Benefits

- Allocating Resources to most needed capacity projects (LOS E & F)
- Stabilize MPO transportation priorities
- Assist in Monitoring Performance Measures
- Better define project limits
- Standardize the process across all of Georgia's urbanized areas

# Recommendations / Next steps to Consider

- MPO's revisit and define their LOS scoring measures during their upcoming LRTP's updates.
  - Consider adopting policy to define LOS D to either acceptable or marginal level of service
  - Review the need and initial project limits of all recommended projects that are being considered during LRTP development.





Questions?