

Statewide Freight and Logistics Plan

GAMPO Annual Work Session

*Tom McQueen, AICP
GDOT Office of Planning
June 25, 2010*



AGENDA

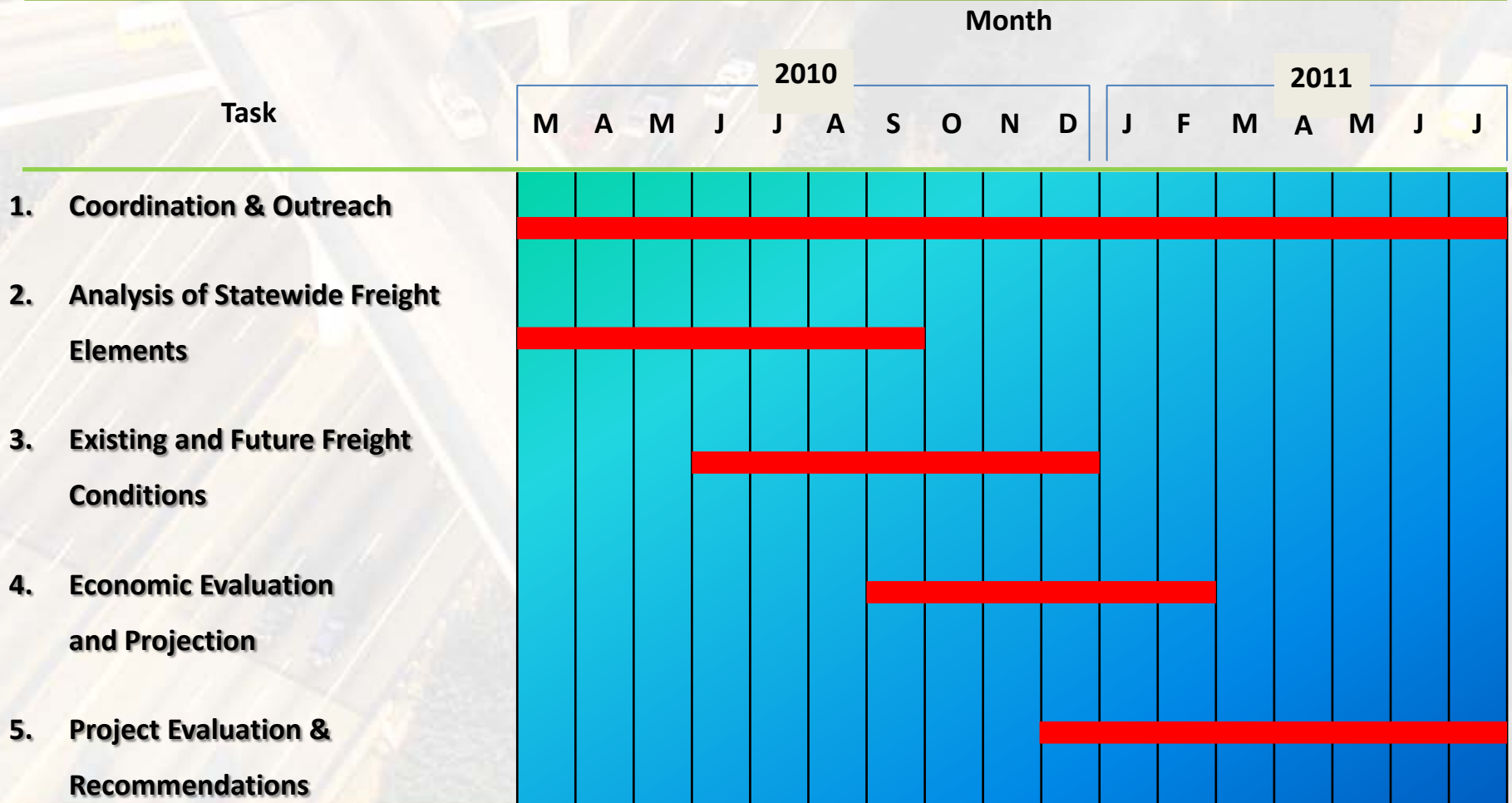
- Project Understanding and Schedule
- Proposed Stakeholder Outreach Strategy
 - Existing/Proposed MPO Freight Plans?
- Next Steps

PROJECT UNDERSTANDING

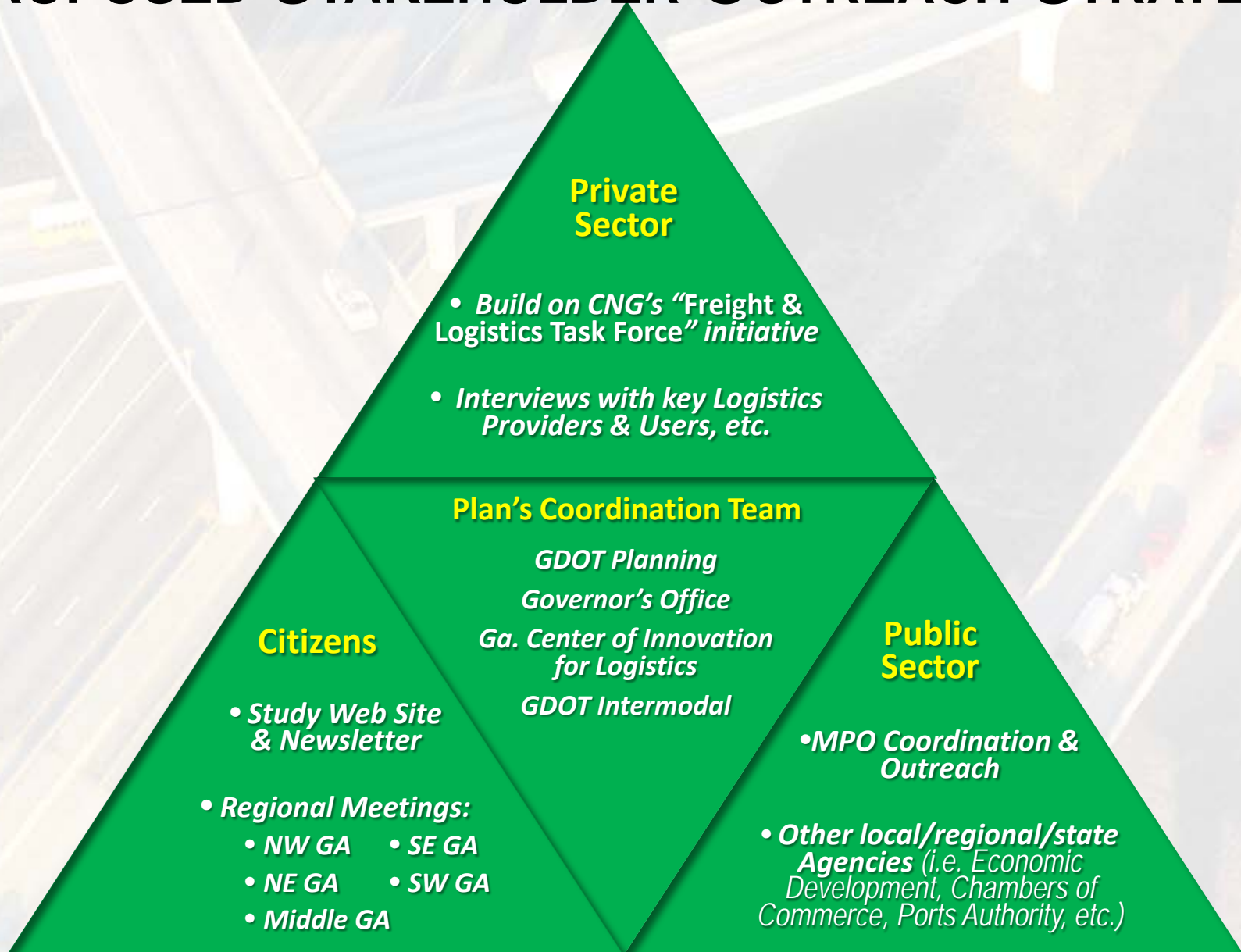
Develop a **Statewide Freight and Logistics Plan** that:

- Builds on the Commission for a New Georgia's "*Freight and Logistics Task Force*" and the Statewide Strategic Transportation Plan (SSTP)
- Identifies projects and funding that advance freight programs
- Maximizes the economic development potential of freight

PROJECT SCHEDULE



PROPOSED STAKEHOLDER OUTREACH STRATEGY



MPO DOCUMENTS

- Freight Plans/Studies
 - Albany Regional Freight Plan, 2007
 - Atlanta Regional Freight Mobility Plan, 2008, and Atlanta Strategic Truck Route Masterplan, 2010
 - Augusta Regional Transportation Study Freight Plan, 2009
 - Savannah/Chatham Co. Intermodal Freight Study, 1998
 - Chattanooga VW Plant Freight Impact Study, 2010
 - Valdosta-Lowndes MPO Freight Movement Study, 2010
 - **Other existing, updated or proposed studies?**
- **LRTPs will be reviewed for MPOs not listed above**

NEXT STEPS

Summer 2010

- Review previous private sector outreach initiatives
- Gather freight conditions and data
 - Identify regional needs and deficiencies
 - Build off existing MPO Plans and Freight Studies

Fall 2010/early Winter 2011

- Project Identification and Evaluation: identify potential solutions and prioritization scenarios

Winter 2011

- Outreach Coordination and Regional Meetings

PROJECT CONTACTS

Georgia DOT

Michelle A. Caldwell, Project Manager

Office of Planning

gafreight@dot.ga.gov

Consultant Team

Dike Ahanotu, Project Manager

Cambridge Systematics, Inc.

dahanotu@camsys.com

www.dot.ga.gov/freight