

Thinking outside the box to integrate equity into transportation planning efforts in the Greater Chattanooga region

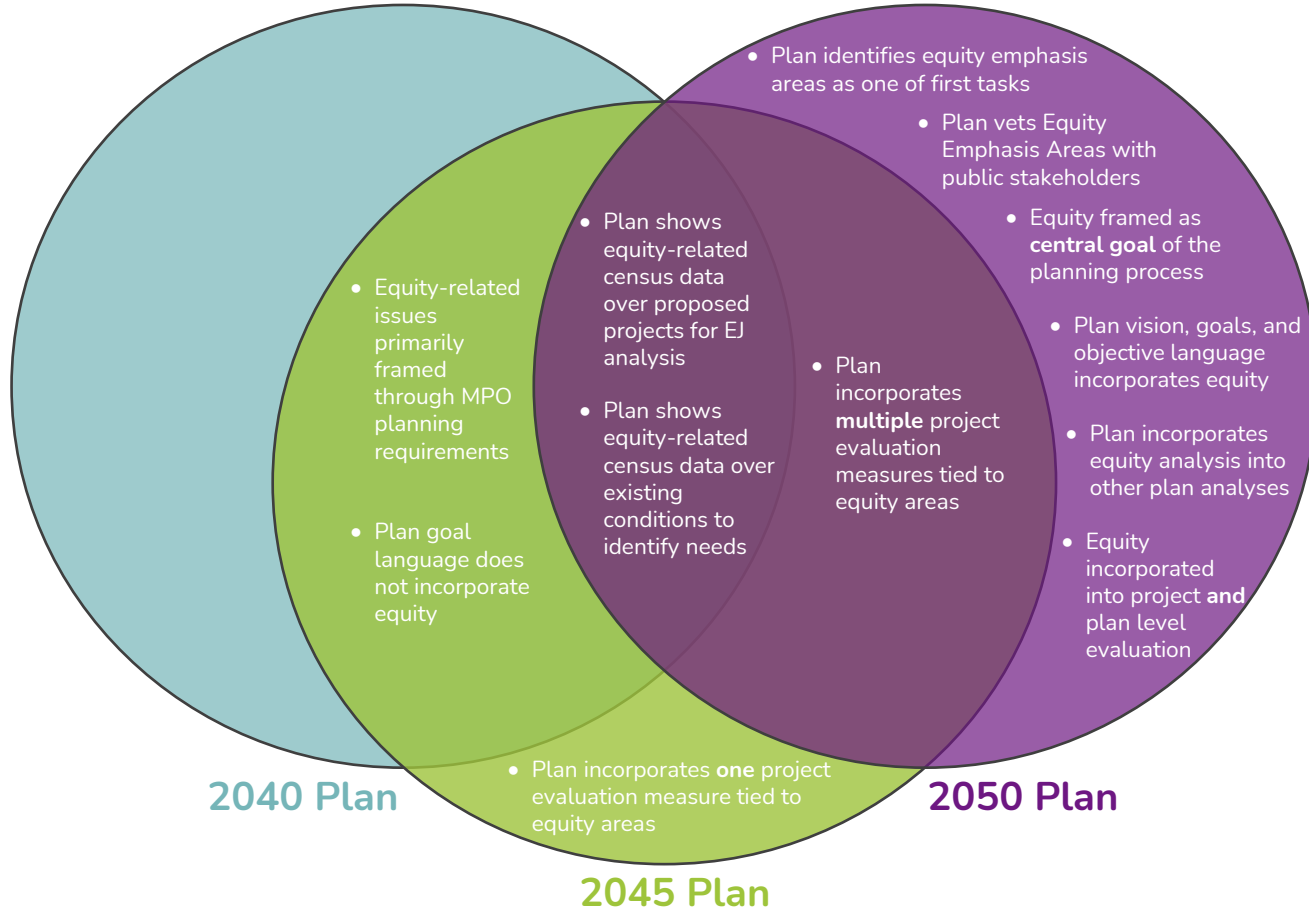
Reflecting on an MPO's evolving approach to meet the intent of planning requirements related to transportation equity



Chattanooga-Hamilton County/North GA Transportation Planning Organization
Modern Mobility Partners
Prepared for March 25, 2024 GAMPO Conference

<https://bit.ly/3F6nw77>

Evolving Approach



2050 Regional Transportation Plan



Goal 1: Equitable Transportation System

Scale of Impact: Within-Community Scale



Create and maintain an equitable transportation system built on a foundation of safe, walkable communities while also providing biking and public transit connections. Projects categorized as “within-community” have a more local impact to the immediate area surrounding the project.

- Equity was one of the three focus areas threaded throughout RTP
- Equity reflected in vision and goals
- Equity emphasis areas (EEAs) focus on traditionally underserved communities and include Justice40 disadvantaged communities
- Public outreach efforts targeted engagement in EEAs
- Project-level measures prioritize projects that benefit EEAs
- Plan-level measure for percent of projects benefiting EEAs

<https://2050rtp-chcrpa.hub.arcgis.com/>

Equity Emphasis Areas

- Low-income households
- Zero-vehicle households
- Low-English proficiency households
- Households with a disability present
- Individuals of Hispanic and/or Latin American ethnicity
- Individuals of Black, Asian, Native American, and other minority (non-white) races
- Adults 25+ with low educational attainment (less than a high school diploma)
- Older adults age 65+
- Children and youth under age 18
- **Public input**

<https://arcg.is/XS44u>

Equity Emphasis Areas

Equity Emphasis Areas (EEAs) are areas in the TPO with a concentration of one or more demographic groups that face particular challenges using the transportation system and/or are historically underserved by the transportation system. The following indicators were used to identify EEAs: low-income households; racial minority populations; ethnic minority populations; zero-vehicle households; low-English proficiency households; households with a disability present; low-educational attainment; older adults aged 65+; and children and youth under age 18. The EEA analysis used a z-score to identify concentrations of these populations relative to the whole TPO region. On this map, the darker an area appears, the more equity indicators are concentrated there.

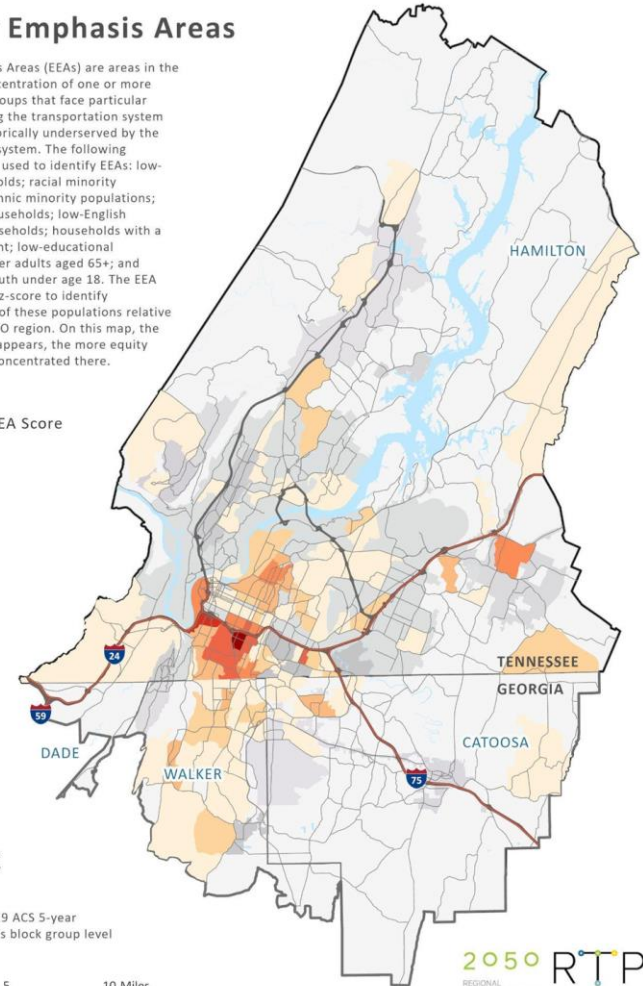
Combined EEA Score



TPO municipalities shown in grayscale

Data source: 2019 ACS 5-year estimates, census block group level

0 5 10 Miles

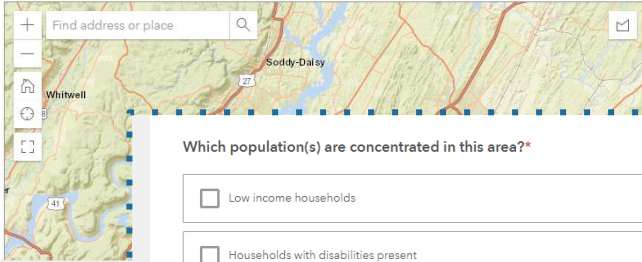


Equity Emphasis Areas - 2050 RTP

This is a survey form to collect public contributions to the dataset of Equity Emphasis Areas that will be used in RTP project evaluation. If you haven't yet, [click here to review the RTP Story Map that explains more about this work](#). If you don't want to use the mapping tool, feel free to email your thoughts about a community or neighborhood that should be identified as an equity emphasis area to rtp@chattanooga.gov.

Draw the neighborhood or community that you want to identify as an equity emphasis area.*

Drag your mouse to navigate the map, and use the +/- buttons in the top left corner to zoom in and out. When you are ready to draw an area, click the polygon shaped icon in the top right corner and start your drawing. When you are done, double click to close the edges. If you need to erase and restart your drawing, click the trashcan icon in the top right corner that appears after you start drawing.



Which population(s) are concentrated in this area?*

Low income households

Households with disabilities present

Older adults 65+

Children and youth 0-17

Black, Asian, or other racial minorities

Hispanic/Latino individuals

Zero vehicle households

Adults age 25+ with low educational attainment

What else do you want us to know about this area?

Submit

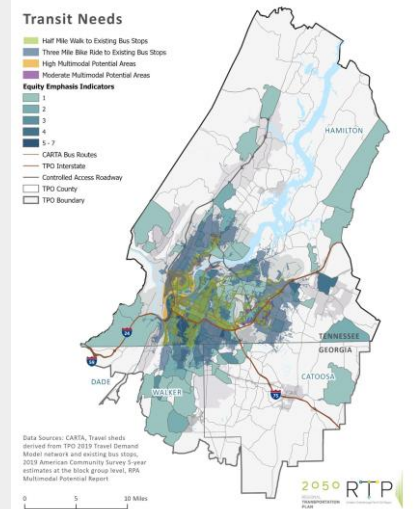
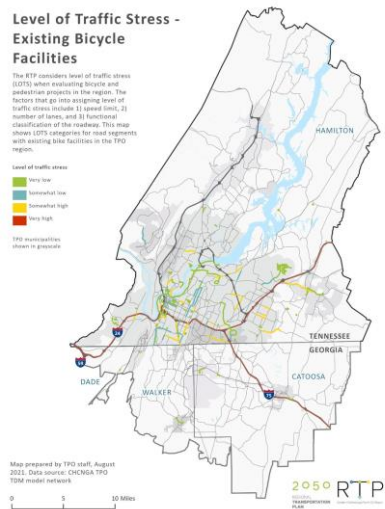
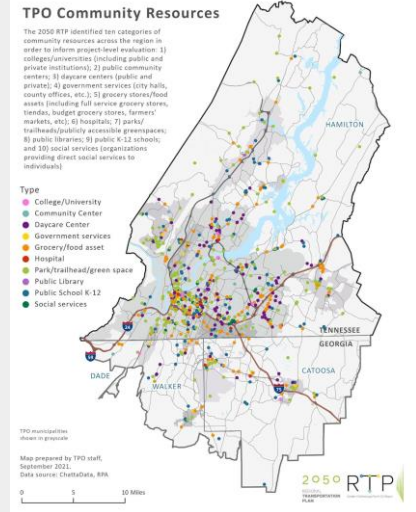
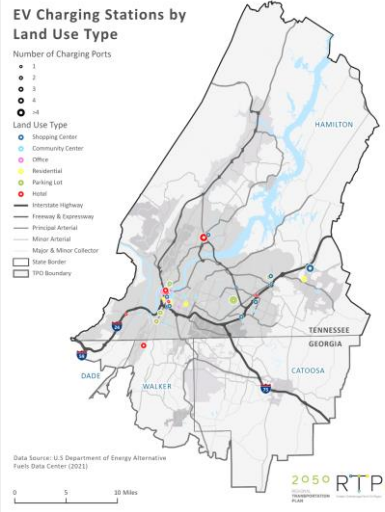
Share your thoughts!

These maps of demographic data are a good starting point for identifying equity emphasis areas for the 2050 RTP. They tell us which census block groups, relative to the entire TPO area, have particularly high concentrations of one or more populations described above. But we know looking at census data alone doesn't tell the whole story. Help us make sure our plan rewards all transportation projects that benefit disadvantaged and historically underserved communities by adding any missing equity emphasis areas using the form below.

[Need help using the mapping tool? Click here for a video tutorial](#)

Project Identification

- EV charging infrastructure
- Access to community resources
- Level of traffic stress
- Transit stop amenities analysis, travel sheds, mobility options & access
- Future considerations: relationship to affordable housing, proximity to resources

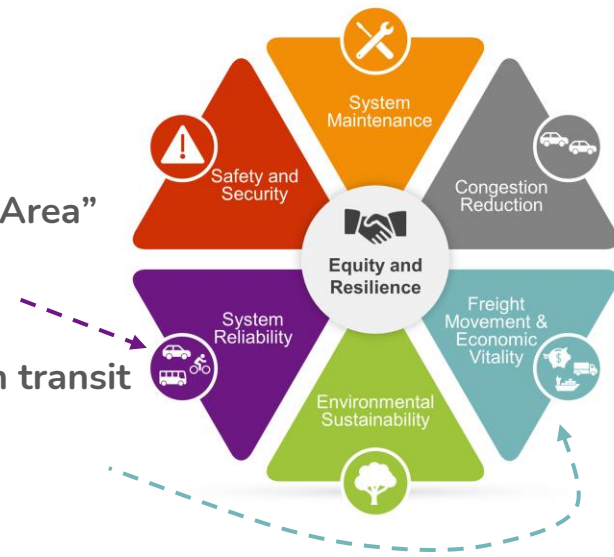


Evaluation Metrics

“Project improves infrastructure conditions within an Equity Emphasis Area”

Bridge or pavement maintenance project within an EEA

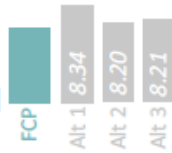
“Project improves multimodal access options and experiences between transit (bus stops) or community resources and EEAs”



Fiscal Constraint & Project Outcomes

8.19

Avg. jobs created per \$1M



23 Projects Benefit Equity Emphasis Areas

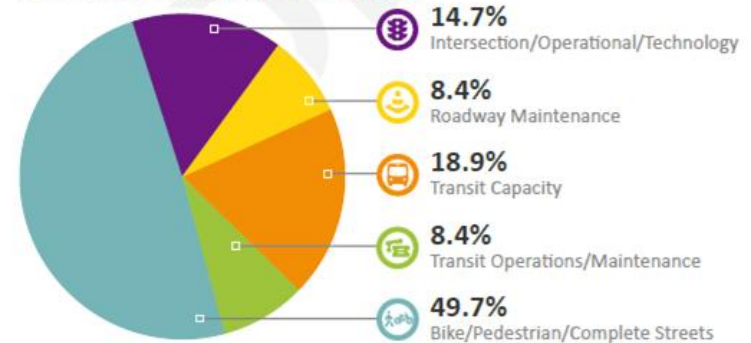


\$175 M for Equity

7 Projects Benefit Socially Vulnerable Census Tracts



Figure 8.4 Set-Aside Projects by Category



Contact

Melissa Taylor

Director of Transportation Planning

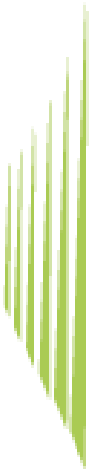
Chattanooga-Hamilton County
Regional Planning Agency

Chattanooga-Hamilton County/North
GA Transportation Planning
Organization

mdtaylor@chattanooga.gov

2050

RTIP



Acknowledgement:

Keli Kemp, AICP, PTP, Co-Founder

Consultant Project Manager

Modern Mobility Partners

kkemp@modernmobilitypartners.com