



GAINESVILLE-HALL
Metropolitan Planning Organization

GAMPO

Safety/Complete Streets

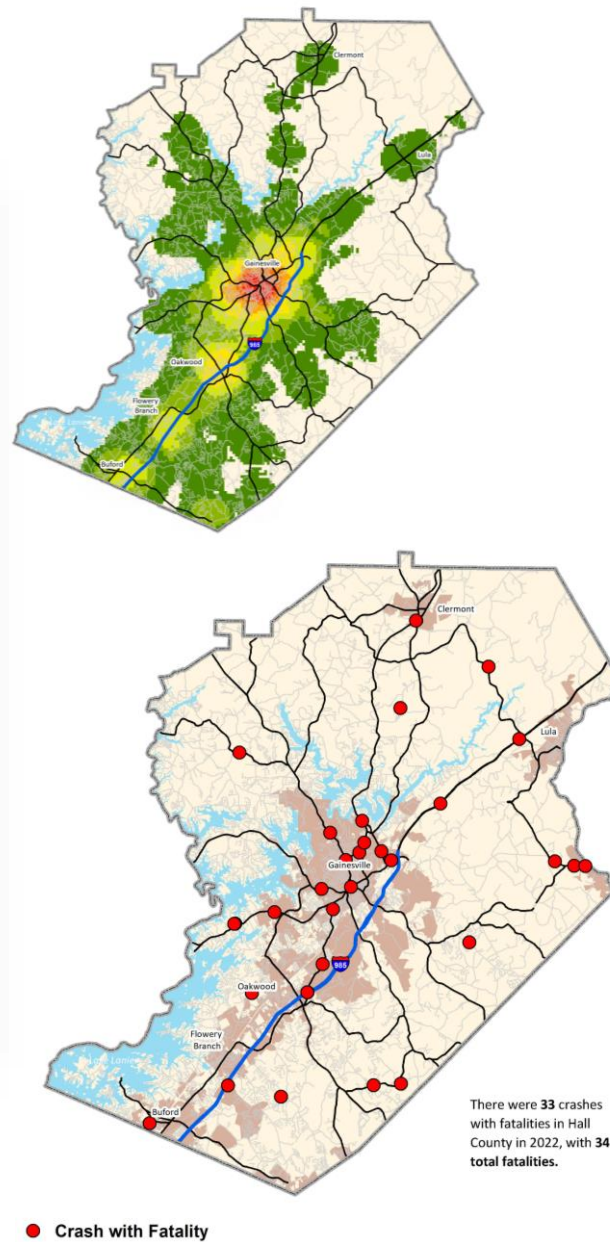
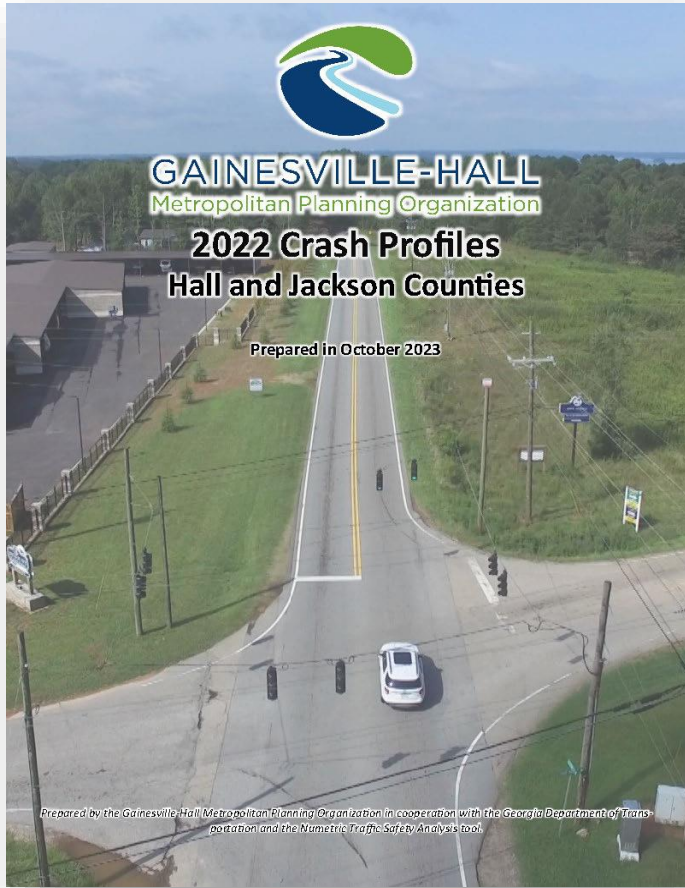
Q&A

March 25, 2024

Safety/Complete Streets

- Annual Crash Reports
- Complete Streets Policy
- TCC Trails Subcommittee
- Safe Streets for All (SS4A)
Safety Action Plan

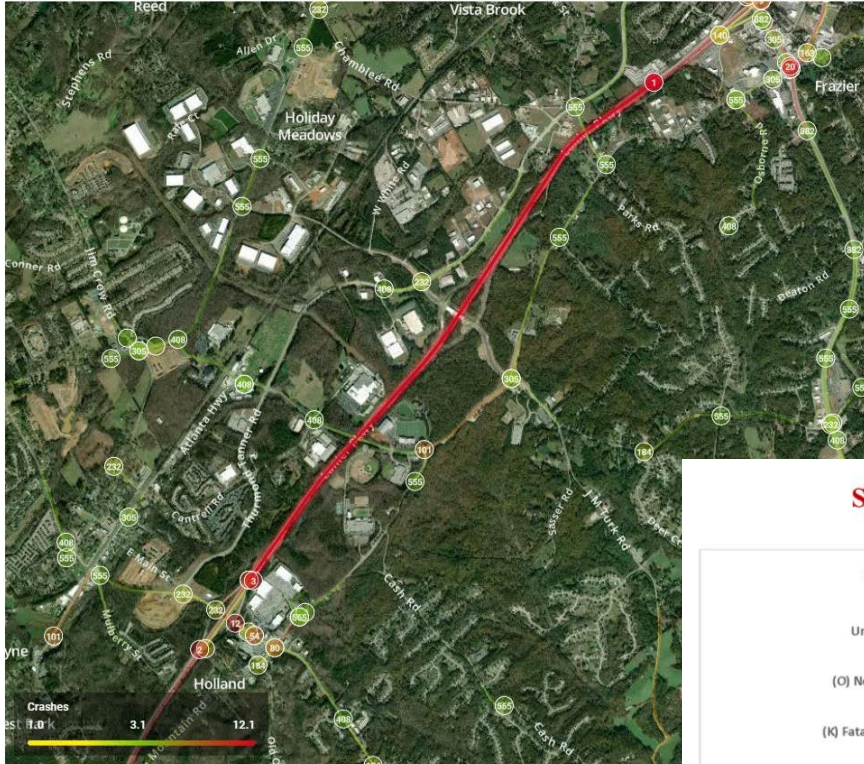




Annual Crash Reports

- GHMPO staff produce annual crash profiles utilizing GEARs/Numetrics crash data for all of Hall County and Jackson County
- Highlights crashes by location and identifies fatality/serious injury/pedestrian-involved crashes

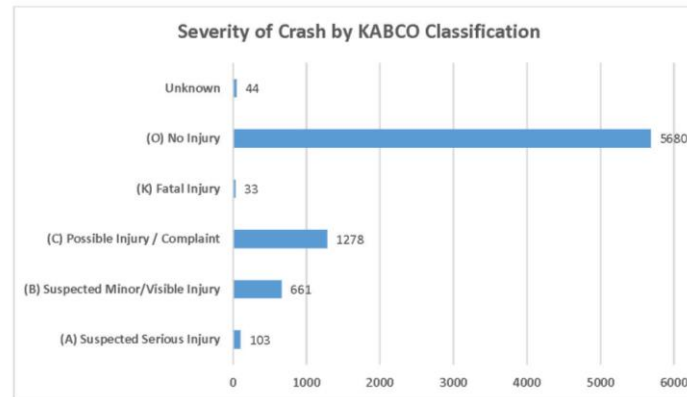
1. I-985 Southbound from Winder Highway/State Route 53 to Spout Springs Road



Appendix A

Top 5 Interstate Network Crash Segments Hall County

Severity and Manner of Collision



Annual Crash Reports

High Accident Locations

Below are the locations determined by Numetric to have the highest concentration of crashes in Hall County. Locations are sorted by their designation as either a road segment or an intersection. Maps for each intersection and segment can be found in Appendices A-E (pages 32-61).

Top 5 Interstate Network Crash Segments - Hall County	Crashes
I-985 Southbound from Winder Highway/State Route 53 to Spout Springs Road	56
I-985 Southbound from Spout Springs Road to Friendship Road/State Route 347	55
I-985 Northbound from Spout Springs Road to Winder Highway/State Route 53	44
I-985 Northbound from Friendship Road/State Route 347 to Spout Springs Road	42
I-985 Northbound from Winder Highway/State Route 53 to Queen City Parkway/State Route 60	41

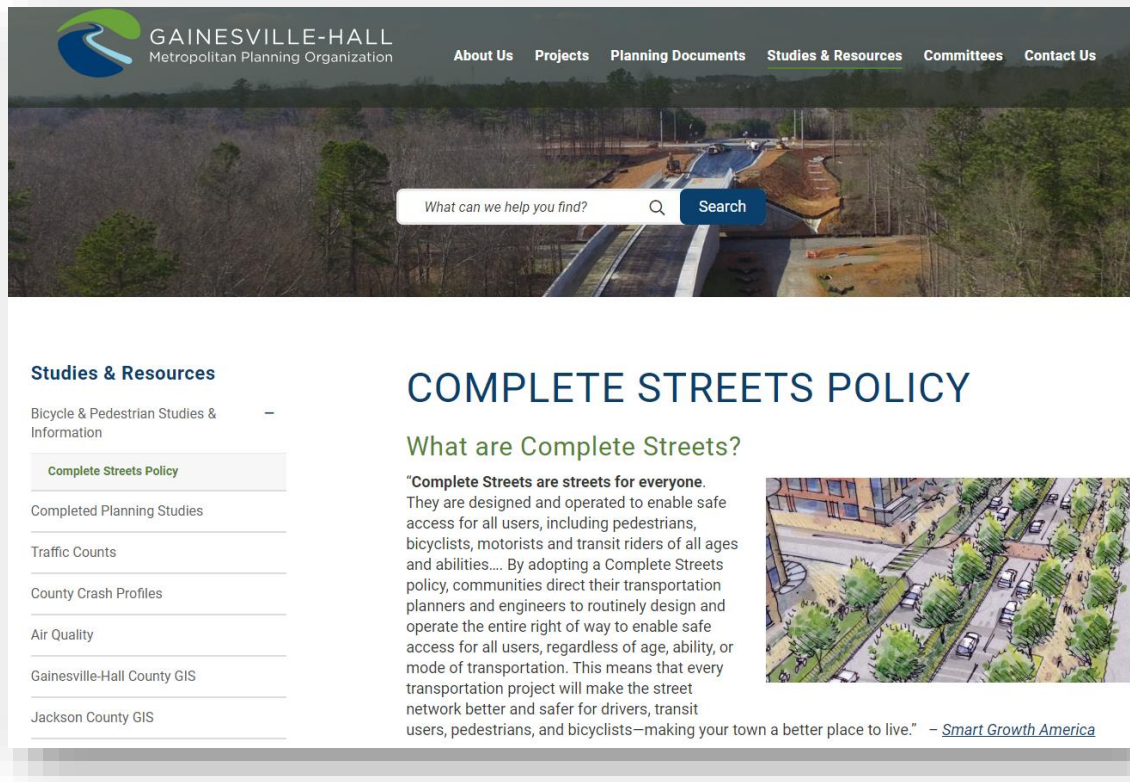
Top 5 Off-Interstate Crash Segments - Hall County	Crashes
Jesse Jewell Parkway/State Route 369 from Banks Street to Queen City Parkway/State Route 53	41
Dawsonville Highway/State Route 53 from McEver Road to Beechwood Boulevard NW	40
McEver Road/State Route 53 from Spring Road to Dawsonville Highway	31
Atlanta Highway/State Route 13 from Tumbling Creek Road to W Park Drive	25
Spout Springs Road between I-985 Exit Ramps	25

Top 5 Crash Intersections - Hall County	Crashes
EE Butler Parkway/US 129 and West Ridge Road	38
Mundy Mill Road/State Route 53 and Atlanta Highway/State Route 13	31
McEver Road/State Route 53 and Dawsonville Highway	31
Jesse Jewell Parkway/State Route 369 and Queen City Parkway/State Route 53	28
Friendship Road/State Route 347 and Gainesville Highway/State Route 13	26

Top 5 Fatal Crash Intersections - Hall County (2022)	Crashes	Fatal
McEver Road and Green Road	11	1
Limestone Parkway/US Route 129 and Beverly Road	10	1
Thompson Bridge Road/State Route 60 and Sandridge Court	7	1
Tanners Mill Road and Ellison Farm Road	2	1
Cash Road and Elizabeth Lane	1	1

Complete Streets Policy

- GHMPO adopted our latest Complete Streets Policy in 2017.
- Planning to adopt updated Policy in 2024 to reference ongoing work with the Bicycle/Pedestrian Plan Update and the SS4A Safety Action Plan



“Every public right-of-way shall be planned, designed, constructed, and maintained such that all residents within the Gainesville-Hall Metropolitan Planning Organization (GHMPO) planning area have multi-modal transportation options to safely and conveniently travel to and from their destinations.”

TCC Trails Subcommittee



- A subcommittee of the TCC was formed in 2019 to plan for the expansion of the Highlands to Islands Multiuse Trail network
- Made up of members from every jurisdiction, the Chamber of Commerce Vision 2030 Greenspace Committee, and local bicycle/pedestrian advocates
- Plan for future trail projects as a collective group mediated by the MPO
- GHMPO utilizes the Trails Subcommittee on various other Bicycle/Pedestrian efforts as well

Safe Streets for All (SSA) Safety Action Plan

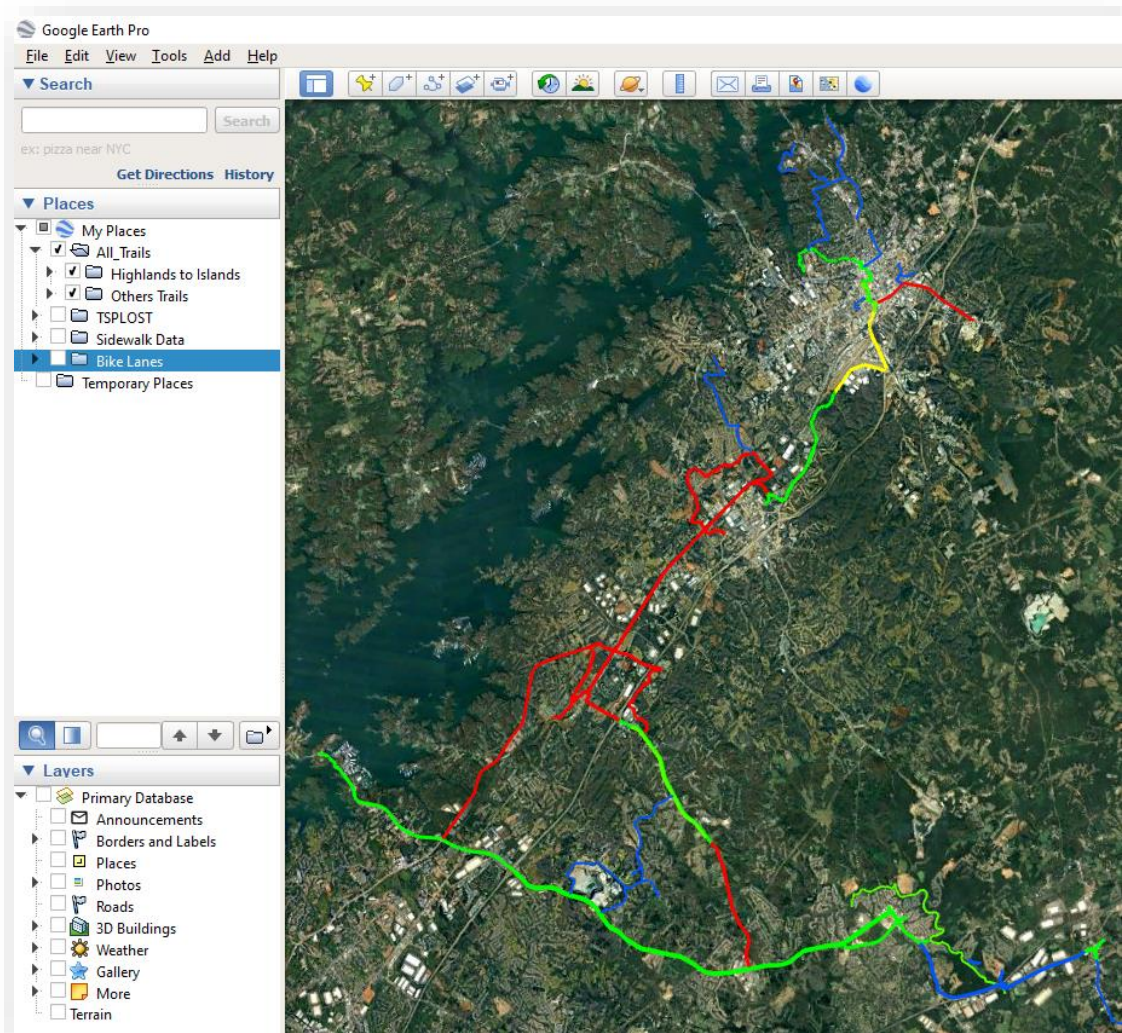


- GHMPO is leading the effort in Hall County for the creation of a Safety Action Plan through the SS4A federal grant. Will have a plan in place by early 2025.
- Will use the Safety Action Plan to apply for implantation funding to complete much needed safety projects for motorists and pedestrians across the most vulnerable communities in the planning area

Data

GHMPO keeps the following data updated and available for any local jurisdiction to download:

1. Annual Crash Database (excel and shapefile)
2. Highlands to Islands Multiuse Trail Network (shapefile, see image to left)
3. Sidewalks (shapefile)
4. Bike Lanes (shapefile)



Additionally, for our Bike/Ped Plan update, our consultant team is utilizing Replica and Strava data to study bicycling and walking travel patterns in the GHMPO planning area.