

# Georgia Association of Metropolitan Planning Organizations

## Current GDOT Intermodal Initiatives



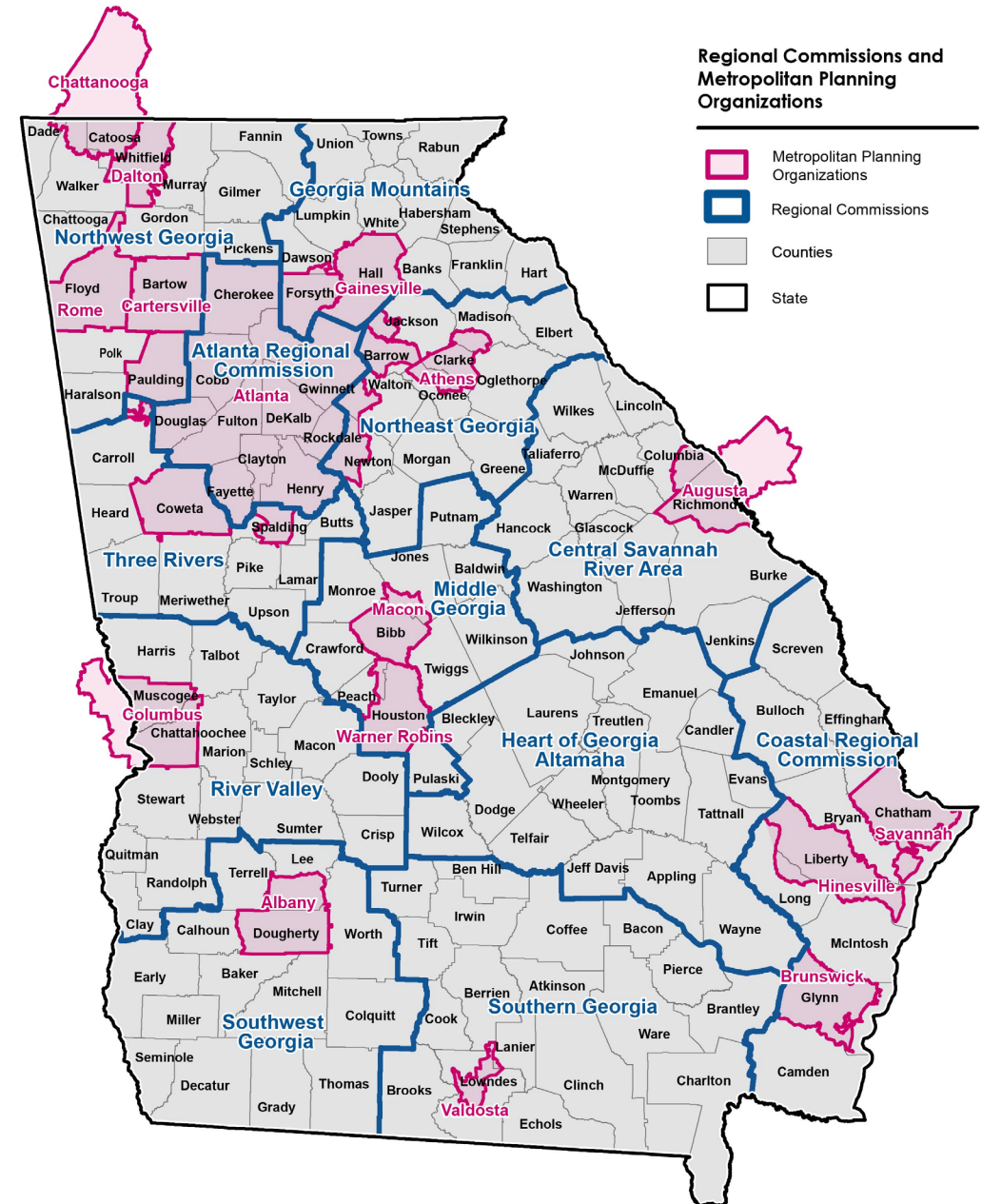
## Introductions

GDOT Intermodal Division  
Shannae Johnson  
[shannjohnson@dot.ga.gov](mailto:shannjohnson@dot.ga.gov)

AECOM  
Brian Smart  
[brian.smart@aecom.com](mailto:brian.smart@aecom.com)

# Current GDOT Intermodal Initiatives

- Regional Transit Development Plans (TDP)
- Statewide Transit Plan (SWTRP) Update
- Atlanta to Savannah Study
- Georgia State Rail Plan



## Regional TDP Context

GDOT's *2020 Statewide Transit Plan (SWTRP) Improving Access and Mobility in 2050* identified these needs:



Regional transit coordination



Expansion of rural transit to serve counties without public transit



Advancement of regional partnerships to accommodate cross-county trips

GDOT is addressing these needs by developing **Regional Transit Development Plans (TDPs)** across the state.

# What is a Regional TDP?

A Regional TDP identifies transit needs and informs future transit system investments.

A Regional TDP also:



Assists in developing a **transit vision**



Has a **20-year horizon schedule** and is updated every 5 years



**Supported by GDOT** through policy and planning grants from the Federal Transit Administration (FTA) and Federal Highway Administration (FHWA)

## Elements of a TDP



Public Engagement Plan



Visioning & Goals, Objectives, and Performance Measures



Existing Conditions and System Performance



Needs Assessment and Analysis



Alternatives Development and Evaluation



Financial Plan



Recommendation and Implementation Plan

# Why Conduct a Regional TDP?



## Connection

Regional connection means multiple transit agencies working together while maintaining their individual identities and authorities.



## Coordination

Regional coordination allows for one transit agency to provide services to a neighboring county. These services can provide inter-county commuter trips.



## Collaboration

Regional collaboration entails multiple transit agencies making joint decisions with formal arrangements to provide for the management or other contractual relationships.



## Consolidation

Regional consolidation involves multiple transit agencies in one region merging into one transit agency to provide transit services.

# Outreach Activities

## Project Advisory Committee (PAC) Meetings

- Fall (Project Overview and Existing Conditions)
- Spring (Vision and Goals and Proposed Alternatives)

## Stakeholder Interviews

- Spring

## Regional TDP Website

- Available now for completed and developing TDPs

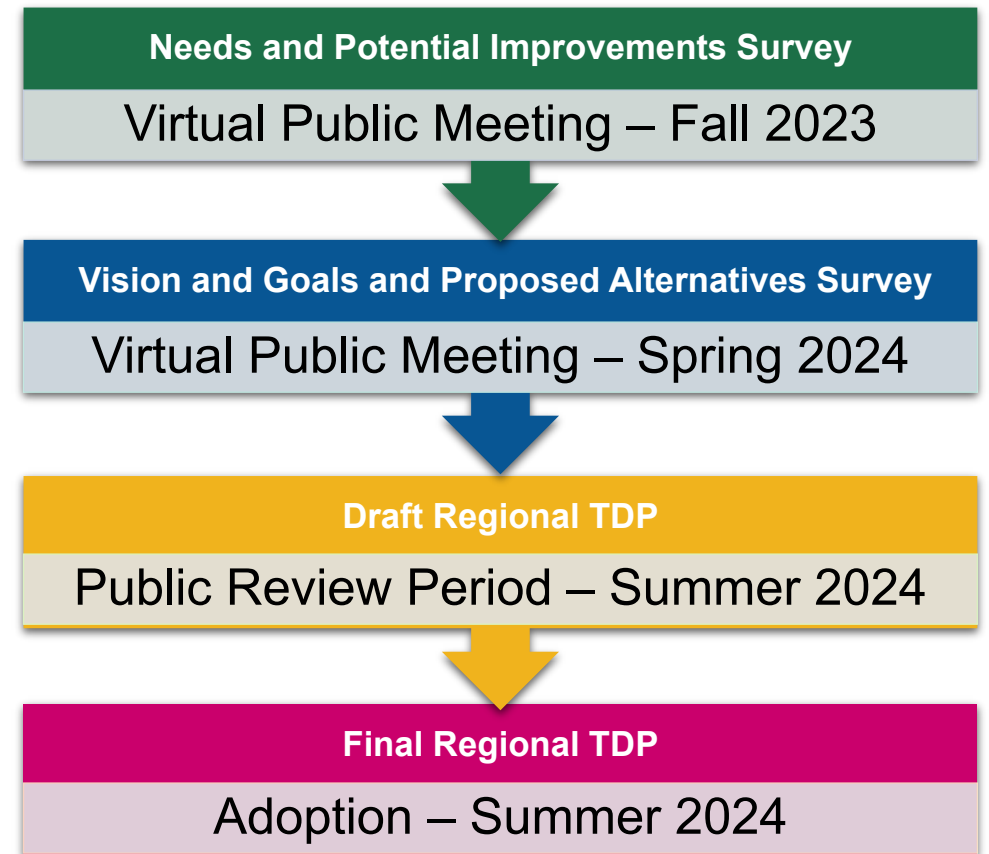
## Online Public Surveys

- Fall (Needs and Potential Improvements)
- Spring (Vision and Goals and Proposed Alternatives)

## Virtual Public Meetings

- Fall (Project Overview and Existing Conditions)
- Spring (Vision and Goals and Proposed Alternatives)

## Public Involvement Process

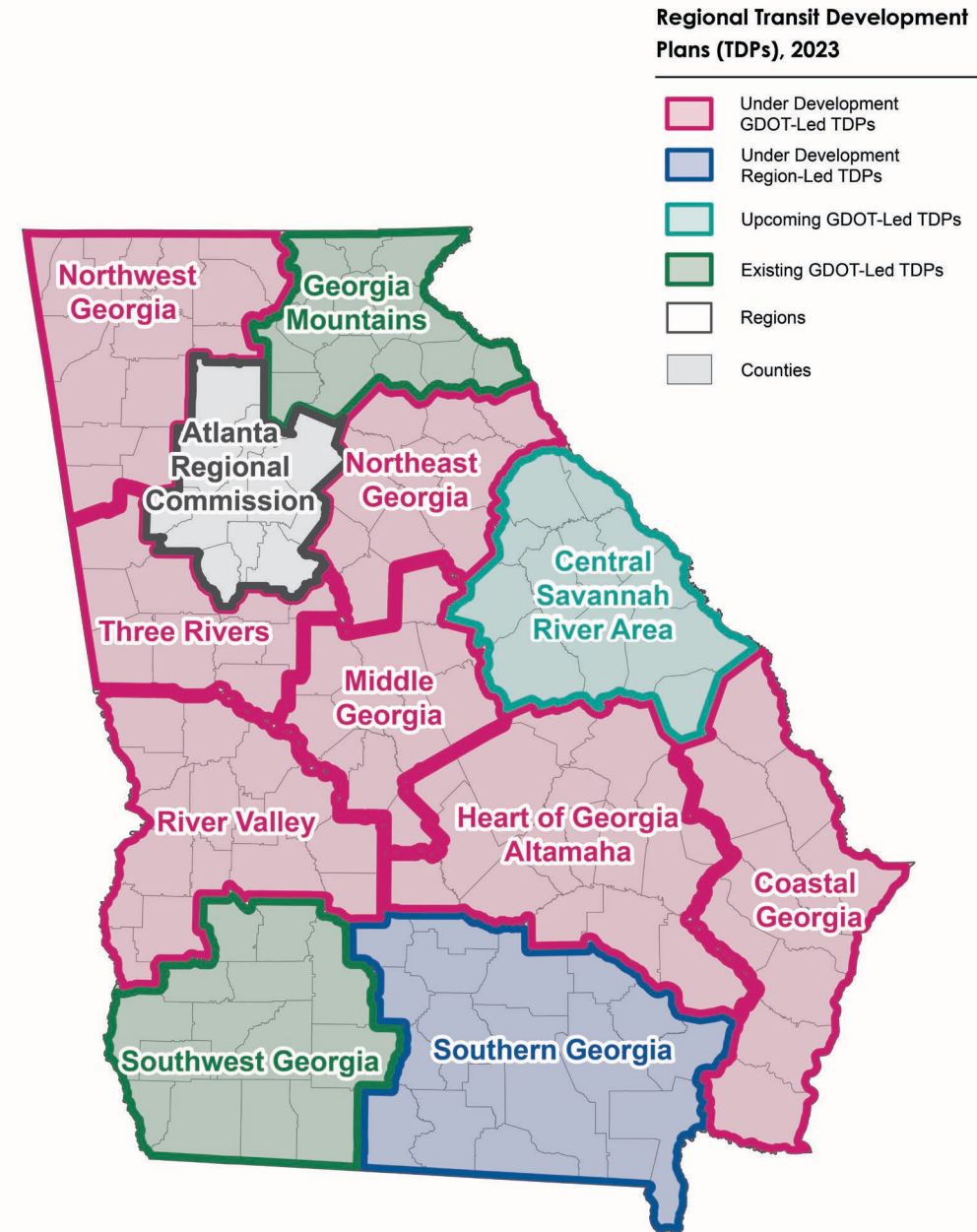




# Regional TDP Progress

## Completed and Underway

- ✓ Georgia Mountains
- ✓ Southwest Georgia
- Coastal Georgia
- Heart of Georgia Altamaha
- Middle Georgia
- Northeast Georgia
- Northwest Georgia
- River Valley
- Three Rivers
- Central Savannah River Area

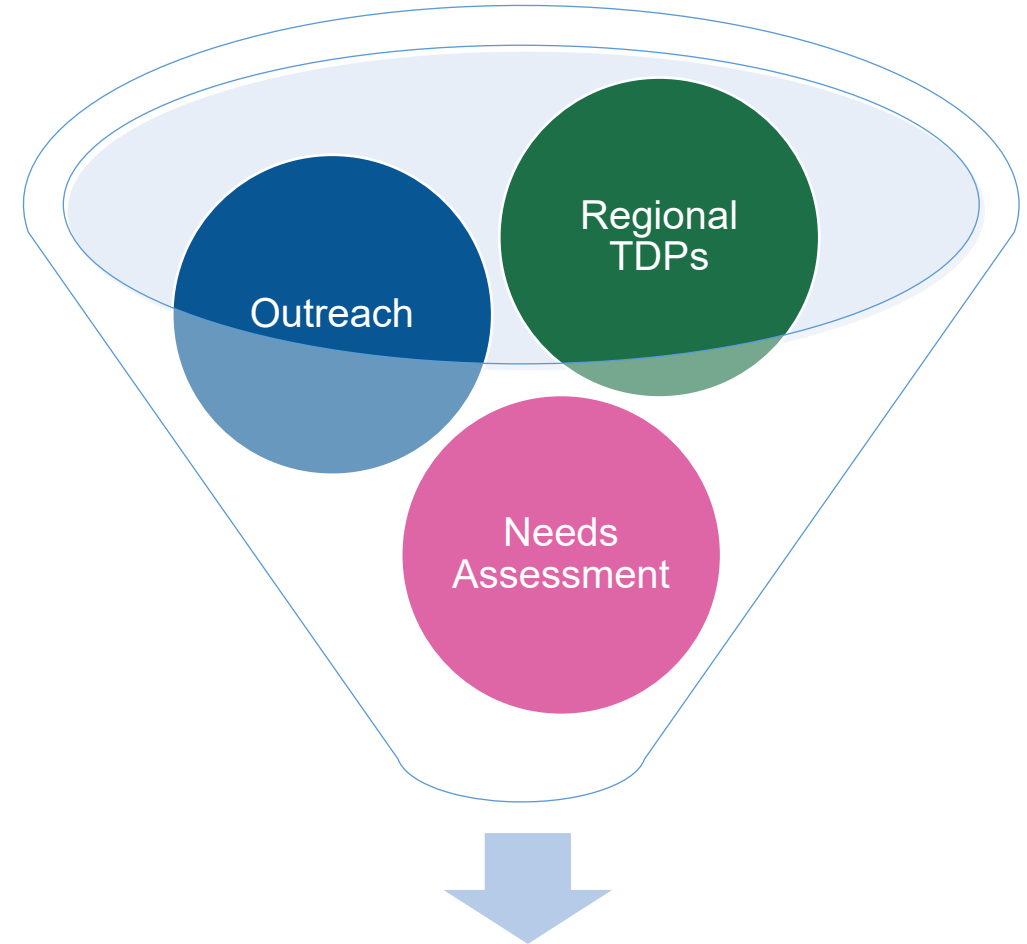




# Statewide Transit Plan (SWTRP) Update

# SWTRP Update

- **Update from 2020 Georgia Statewide Transit Plan (SWTRP)**
  - **Guides** future direction of transit programs through 2050
  - **Documents** transit needs across the state and prioritizes funding investments
  - **Will address** new programs from the Bipartisan Infrastructure Law (BIL)
  - **Captures** demographic and mobility pattern changes from Census 2020 data
- **Regional TDPs provide:**
  - **Additional data** for Needs Assessment
  - **Current transit profiles** and operating characteristics
  - **Applicable strategies** and recommendations to meet needs
- **Statewide outreach opportunities** for stakeholders, operators, and the public

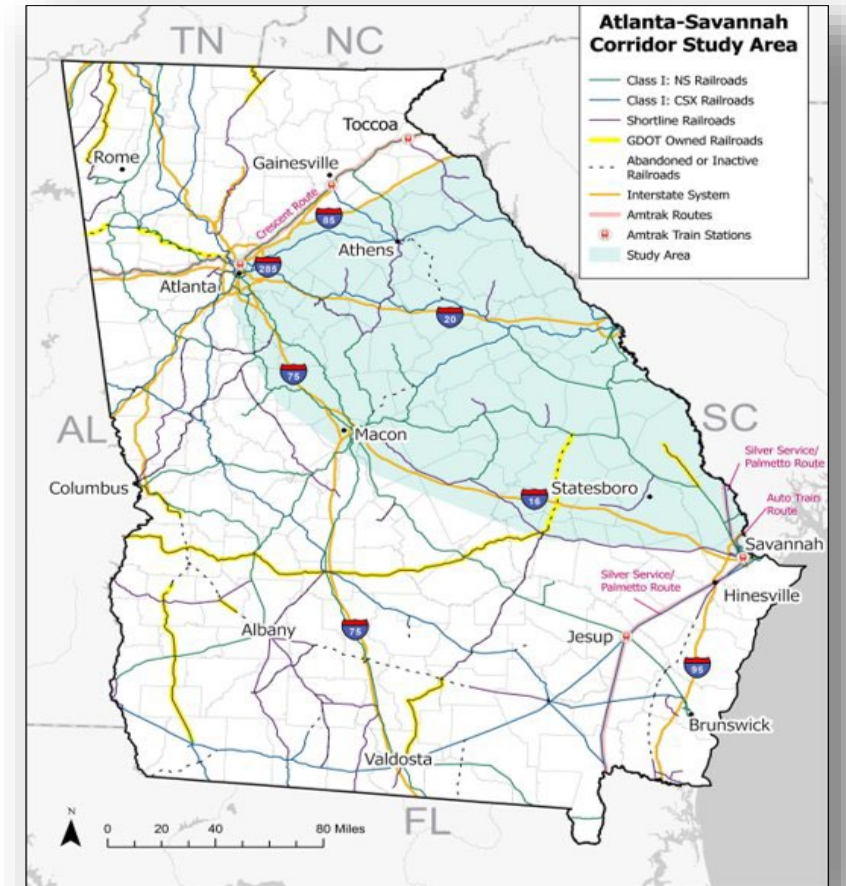


**SWTRP Update**

# Atlanta to Savannah Study

# Atlanta to Savannah Passenger Rail Study

- April 2022: \$8M in Congressional Directed Spending (CDS) announced
- Evaluate the benefits and costs of a passenger rail service between Atlanta and Savannah
- Focus on financially feasible, practical solutions to implement a passenger rail service
- Identify and narrow the range of service alternatives across the study area
- Extensive stakeholder outreach will be conducted throughout the study

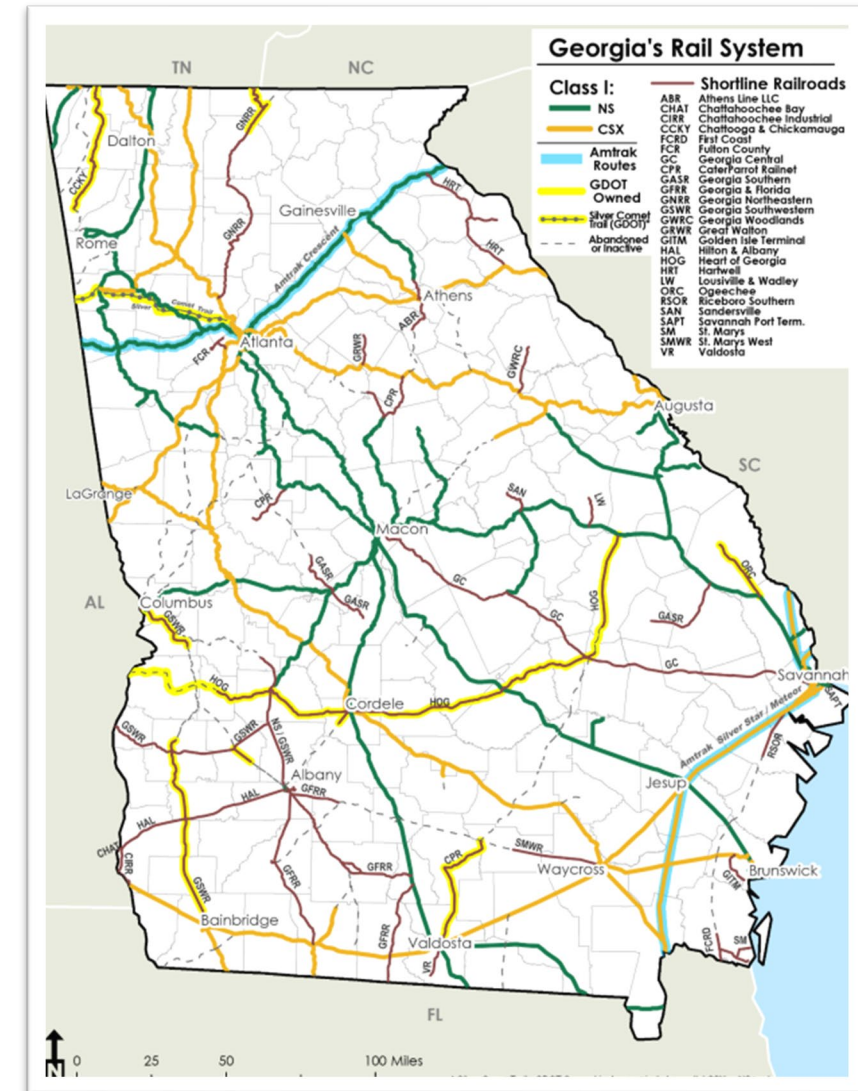


# Georgia State Rail Plan



# Georgia State Rail Plan

- Examine the role of the rail system in Georgia
- Identify benefits of rail to the state
- Highlight rail system trends and needs
- Look at potential investments and opportunities for passenger and freight rail
- Review funding sources available for system investments



Questions?



# Project Contacts

## GDOT Intermodal Division

Phil Peevy

[ppeevey@dot.ga.gov](mailto:ppeevey@dot.ga.gov)

Johnathan McLoyd

[jomcloyd@dot.ga.gov](mailto:jomcloyd@dot.ga.gov)

Matthew Wilson

[MaWilson@dot.ga.gov](mailto:MaWilson@dot.ga.gov)

Shannae Johnson

[shannjohnson@dot.ga.gov](mailto:shannjohnson@dot.ga.gov)

## Additional Questions or Comments about TDP's ?

Email: [RegionalTDP@dot.ga.gov](mailto:RegionalTDP@dot.ga.gov)

*Please include "[Name of TDP]" in the subject line*

## Regional TDP Website

<https://regionaltdp-gdot.hub.arcgis.com/>